

Bee Borders Plant List



The Bee Borders

Bees forage for food from early spring until the first frosts, and so our Bee Borders have been planted to give a long season of interest and provide bees with a succession of food sources. The planting scheme is a combination of blues, mauves and violets, mixed with complementary yellows – this is the part of the colour spectrum that bees can see best.

You can play an important role in supporting the bee population by including some of these beautiful plants in your garden at home. Most of the plants in our Bee Borders are readily available from garden centres or can be grown easily from seed or cuttings.

Early Spring

- Aubrieta deltoidea* ‘Royal Violet’
(Purple Rock Cress)
- Erica carnea f. alba* ‘Snowbelle’
(Winter Heath)
- Helleborus niger* (Christmas Rose)
- Iberis sempervirens* ‘Schneeflocke’
(Evergreen Candytuft)
- Pulmonaria* ‘Cotton Cool’ (Lungwort)

Spring/Summer

- Allium schoenoprasum* (Chives)
- Allium sphaerocephalon* (Round-Headed Leek)
- Anchusa officinalis* (Common Bugloss)

- Aquilegia vulgaris* (Columbine)
- Borago officinalis* (Borage)
- Campanula carpatica* ‘Blue Clips’
(Carpathian Bellflower)
- Campanula fenestrellata* (Adriatic Bellflower)
- Cerintho minor* (Lesser Honeywort)
- Consolida ajacis* (Larkspur)
- Digitalis purpurea* ‘Excelsior Mixed’
(Common Foxglove)
- Erysimum pulchellum* (Wallflower)
- Geranium renardii* (Renard’s Geranium)
- Geranium* × *cantabrigiense* ‘Biokovo’
(Cambridge Geranium)
- Geranium* × *monacense* var. *monacense* (Monacense Cranesbill)
- Geranium* ‘Rozanne’ (Rozanne Cranesbill)
- Iris sibirica* ‘Tycoon’ (Siberian Iris)
- Lamium maculatum* (Spotted Dead-Nettle)
- Linaria purpurea* ‘Canon J. Went’
(Purple Toadflax)
- Nepeta racemosa* ‘Little Titch’
(Catmint)
- Phacelia tanacetifolia* (Lacy Phacelia)
- Salvia forskaehelei* (Forsskaol’s Sage)
- Salvia pratensis* ‘Rose Rhapsody’
(Meadow Sage)
- Salvia* × *sylvestris* ‘Mainacht’
(Woodland Sage)
- Stachys byzantina* (Lamb’s Ear)

Succisa pratensis (Devil's-Bit Scabious)
Thalictrum speciosissimum (Meadow Rue)

Summer

Agastache 'Black Adder' (Giant Hyssop)
Ajuga reptans 'Catlins Giant' (Bugle)
Allium 'Purple Sensation' (Ornamental Onion)
Antirrhinum braun-blanquetii (Snapdragon)
Antirrhinum majus 'Night & Day' (Snapdragon)
Baptisia 'Lemon Meringue' (False Indigo)
Buddleja davidii 'Buzz Ivory' (Butterfly Bush)
Centaurea scabiosa (Greater Knapweed)
Cephalaria radiata (Yellow Scabious)
Ceratostigma plumbaginoides (Hardy Plumbago)
Delphinium elatum (Delphinium)
Delphinium requienii (Requien's Delphinium)
Digitalis ferruginea (Rusty Foxglove)
Digitalis viridiflora (Green Foxglove)
Echinacea purpurea (Purple Coneflower)
Echinacea purpurea 'White Swan' (White Coneflower)
Echinops ritro 'Veitch's Blue' (Globe Thistle)
Eryngium giganteum 'Silver Ghost' (Miss Willmott's Ghost)

Eryngium planum (Flat Sea Holly)
Geranium 'Rozanne' (Rozanne Cranesbill)
Geranium renardii (Renard's Geranium)
Helenium 'The Bishop' (Sneezeweed)
Lavandula × *intermedia* 'Sussex' (Lavender)
Linaria purpurea 'Canon J. Went' (Purple Toadflax)
Lupinus polyphyllus 'Chandelier' (Garden Lupin)
Monarda fistulosa (Wild Bergamot)
Nepeta 'Blue Dragon' (Catmint)
Salvia transsylvanica (Transylvanian Sage)
Salvia uliginosa (Bog Sage)
Scabiosa atropurpurea 'Blue Cockade' (Pincushion Flower)
Scabiosa caucasica 'Blausiegel' (Caucasian Scabious)
Scabiosa ochroleuca (Yellow Scabious)
Symphyotrichum novae-angliae (New England Aster)
Teucrium hircanicum (Wood Sage)
Verbascum phoeniceum 'Violetta' (Purple Mullein)
Verbascum phoeniceum 'Rosetta' (Pink Mullein)
Verbena bonariensis (Purpletop Vervain)

Late Summer/Autumn

Aconitum carmichaelii 'Kelmescott' (Monkshood)
Agastache rugosa 'Liquorice Blue' (Korean Mint)

Allium 'Summer Drummer'
(Ornamental Onion)
Aster 'Little Carlow' (Michaelmas
Daisy)
Campanula lactiflora 'Prichards
Variety' (Milky Bellflower)
Cerinthe major subsp. *purpurascens*
(Greater Honeywort)
Cosmos 'Rosetta' (Garden Cosmos)
Cosmos sulphureus 'Polidor Mixed'
(Sulphur Cosmos)
Echinacea purpurea 'White Swan'
(White Coneflower)
Elsholtzia stauntonii (Mint Shrub)
Eupatorium dubium 'Baby Joe' (Joe
Pye Weed)
Hylotelephium 'Herbstfreude'
(Autumn Joy Stonecrop)
Lysimachia clethroides (Gooseneck
Loosestrife)
Monarda bradburiana (Eastern Bee
Balm)
Sedum 'Ruby Glow' (Stonecrop)
Trifolium rubens (Red Feather Clover)
Veronicastrum virginicum (Culver's
Root)

Year-round

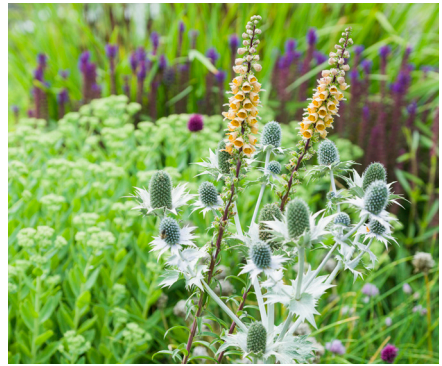
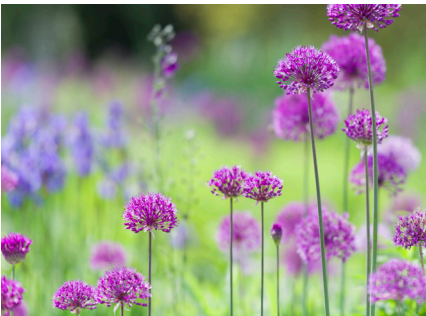
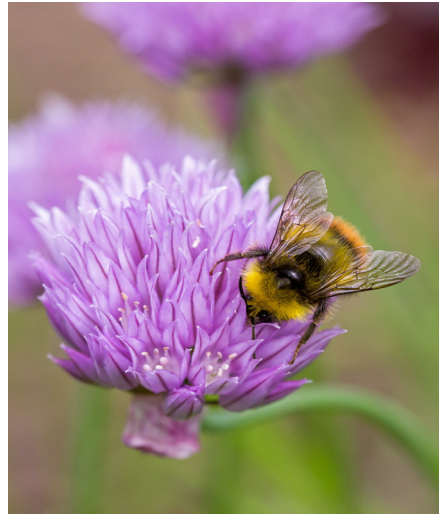
Trachycarpus fortunei (Windmill
Palm)

Last updated May 2024

Cambridge University Botanic Garden,
1 Brookside, Cambridge CB2 1JE
General Enquiries: 01223 336265
www.botanic.cam.ac.uk



UNIVERSITY OF CAMBRIDGE
MUSEUMS
& BOTANIC GARDEN



Left column: *Antirrhinum braun-blanquetii*, *Erysimum pulchellum*, *Allium* 'Purple Sensation'.

Right column: *Veronicastrum virginicum*, *Allium schoenoprasum*, *Eryngium giganteum* and *Digitalis ferruginea* (pictured together).